



## Jasper Arts Tech Information for Jasper Arts Center

951 College Avenue, Jasper, IN 47546

:DANNY KOPP (FACILITY MANAGER & TECHNICAL DIRECTOR):  
:DKOPP@JASPERINDIANA.GOV :812-482-3070 :812-634-6197:

### STAGE DIMENSIONS

#### Depth:

Plaster line to cyc: 30 feet  
Plaster line to back of house: 39 feet  
Apron to Grand Traveler: 5½ feet

#### Wing Space:

Stage Left: 15 feet (obstructed)  
Stage Right: 15 feet  
curtains extend into wings

#### Width:

Proscenium width: 40 feet  
Wall to wall: 82 feet

#### Height

NON FLY-HOUSE featuring 16 feet average trim heights  
Stage floor to I-Beam: 25 feet  
Proscenium height: 18 feet

### STAGE ACCESS

Loading Dock: Truck height with dock plate at stage level 8' x 12'  
Internal loading door 7'6" x 11'6"

External Sidewalk: Exit door USL wraps around front of building as well as down and around to side entry found on dance studio level

### POWER/DISCONNECTS

400 AMP/3-Phase Stage Power (USR) venue's house lighting system also connected to this power source  
200 AMP/3-Phase Stage Power (USR)  
100 AMP/3-Phase Stage Power  
Camlock connectors 100 & 200

### DRESSING ROOMS & SUPPORTED SPACES

Small Chorus Dressing Room: 5-Person, lighted mirrors, restroom and shower, includes in-room sinks

Large Chorus Dressing Room: 6-Person lighted mirrors, restroom and shower, includes in-room sinks.

Availability for additional six members, total maximum for room is 12 total.

Green Room: Lounge area, refrigerator/freezer, eat-in seating availability

Dance Studio: Located at ½ level from the stage at lower level door entry. 54'x27' space includes full length mirrors

Laundry: Washer and dryer are stacked and located in the loading dock. Steamers and irons are in dressing rooms.

FOH/Tech Booth: Light and Audio Console located in the balcony above the back of house auditorium

### HEADSET SYSTEM

8 Wireless Headsets available, one channel

Clear Com, 7 stations--SL, SR, Technical Balcony/FOH, House Center



## Jasper Arts Tech Information for Jasper Arts Center

951 College Avenue, Jasper, IN 47546

⋮ DANNY KOPP (FACILITY MANAGER & TECHNICAL DIRECTOR) ⋮  
⋮ DKOPP@JASPERINDIANA.GOV ⋮ 812-482-3070 ⋮ 812-634-6197 ⋮

---

### ELECTRICS: Maximum trim height 20'

House Beam: 32 circuits (usually use 26° instrumentation)

Electric #1: 24 circuits (flyable to hang); 5' from plaster line

Electric #2: 24 circuits (flyable to hang); 13' from plaster line

Electric #3: 24 circuits (flyable to hang); 20' from plaster line

Electric #4: 4 available color border lights/cyc lighting; 25' from plaster line

Stage Pockets - located in 2nd and 3rd wings, 4 circuits per pocket w/total of 16 circuits; usually need to 2-fer

---

### DIMMING SYSTEM:

ETC Element or ETC Express 48/96

ETC Sensor dimmer rack, 132 stage dimmers (dimmer per circuit)

5 house dimmers (controlled w/ stage lighting)

---

### INSTRUMENT INVENTORY:

#### ETC

(18) 26° ETC Source 4 Juniors (use "m" templates)

(25) 36° ETC Source 4 Juniors (use "m" templates)

(5) 25°- 50° ETC Source 4 Junior Zooms (use "m" templates)

(2) Source 4s - 19°

(24) Source 4 PARs

#### Century

(8) 6x16 - 750 watt ellipses w/ gobo slot

(21) 6x12 - 750 watt ellipses w/ gobo slot

(12) 6x9 - 750 watt ellipses w/ gobo slot

(40) 6" - 500 watt Fresnel (9 Strand-Century)

#### Altman

(12) 6x12 - 1000 watt Altman axial ellipses w/ gobo slot

(4) 6x12 - 750 watt Altman ellipses w/ adjustable iris

(10) 6" - 1000 watt Fresnel

(6) PAR 64s, narrow, medium, & wide focus

#### Spotlights & Misc.

(6) 40° Colortran 575 watt ellipses w/ gobo slot

(6) 30° Colortran 575 watt ellipses w/ gobo slot

(2) Lycian SuperArc 400 followspots (400W HTI lamp)

(2) Lycian Midget 2K followspots (2000W BWA lamp)



## Jasper Arts Tech Information for Jasper Arts Center

951 College Avenue, Jasper, IN 47546

⋮ DANNY KOPP (FACILITY MANAGER & TECHNICAL DIRECTOR) ⋮  
⋮ DKOPP@JASPERINDIANA.GOV ⋮ 812-482-3070 ⋮ 812-634-6197 ⋮

---

### MIXER

Digital Board: Midas M32 [FOH position in tech balcony]

Analog Board: Soundcraft GB8 [DSL storage for band mixes]

32 input snake from stage to FOH position in tech balcony

---

### SPEAKERS

(3) \*EAW MK-5366 15" Speakers (left/center/right) - in air above orchestra

(3) \*EAW MK-2366 12" Speakers (left/center/right) - in air mid auditorium on delay

(4) \*Celestion SR 2 1000's subwoofers - in the orchestra pit

(4) Carvin 752 wedge monitors

(2) Yamaha A15 speakers

(2) Grund Audio Design monitors (ST-122M)

(2) Electro Voice ZLX-12P powered speakers

*\*DENOTES MAIN SOUND SYSTEM*

---

### MICROPHONES

(7) Shure SM-58s

(5) Shure SM-57s

(4) Shure SM-81s

(8) Audix F15s

(3) Samson S11s

(1) Audio Technica ATW-R10 Wireless Lavalier

(1) Shure AXS58D-V Handheld Wireless, Freq. 169.445

(1) Shure AXS58D-CA Handheld Wireless, Freq. 176.200

(4) Shure Presenter Series Wireless Lavalieres, Freq. 598.625, 603.900, 615.900, 623.350

(1) JTS NX2 drum mic

(1) JTS NX7 drum mic

(3) JTS NX6 drum mics

(1) Samson IR-3/SM58 Handheld Wireless

(3) Audio Technica AT871 Boundary (170° & 100° elements)

---

### PROJECTORS & SCREENS

(2) EPSON EX3220 1080P Digital Projector

(2) BENQ MH733 1080P Digital Projector

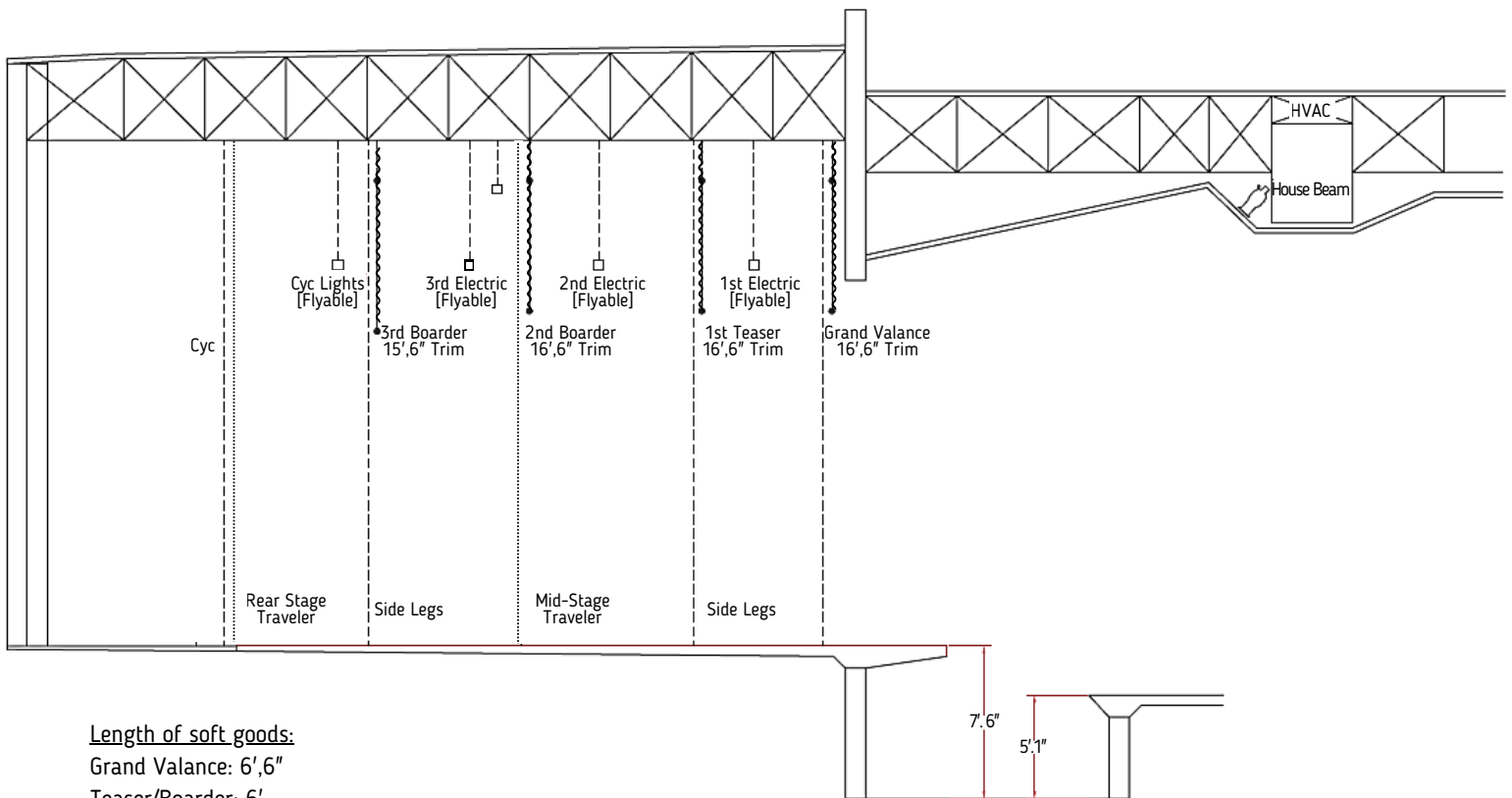
Projector location setup in front of orchestra for mirrored displays on left and ride of the proscenium  
screen dimensions: 7.5' x 10'



## Jasper Arts Tech Information for Jasper Arts Center

951 College Avenue, Jasper, IN 47546

:DANNY KOPP (FACILITY MANAGER & TECHNICAL DIRECTOR):  
:DKOPP@JASPERINDIANA.GOV :812-482-3070 :812-634-6197:



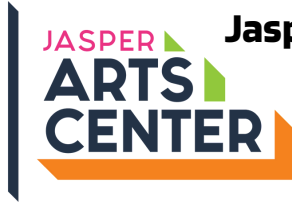
### Length of soft goods:

Grand Valance: 6'6"

Teaser/Boarder: 6'

Travelers/Legs: 18'

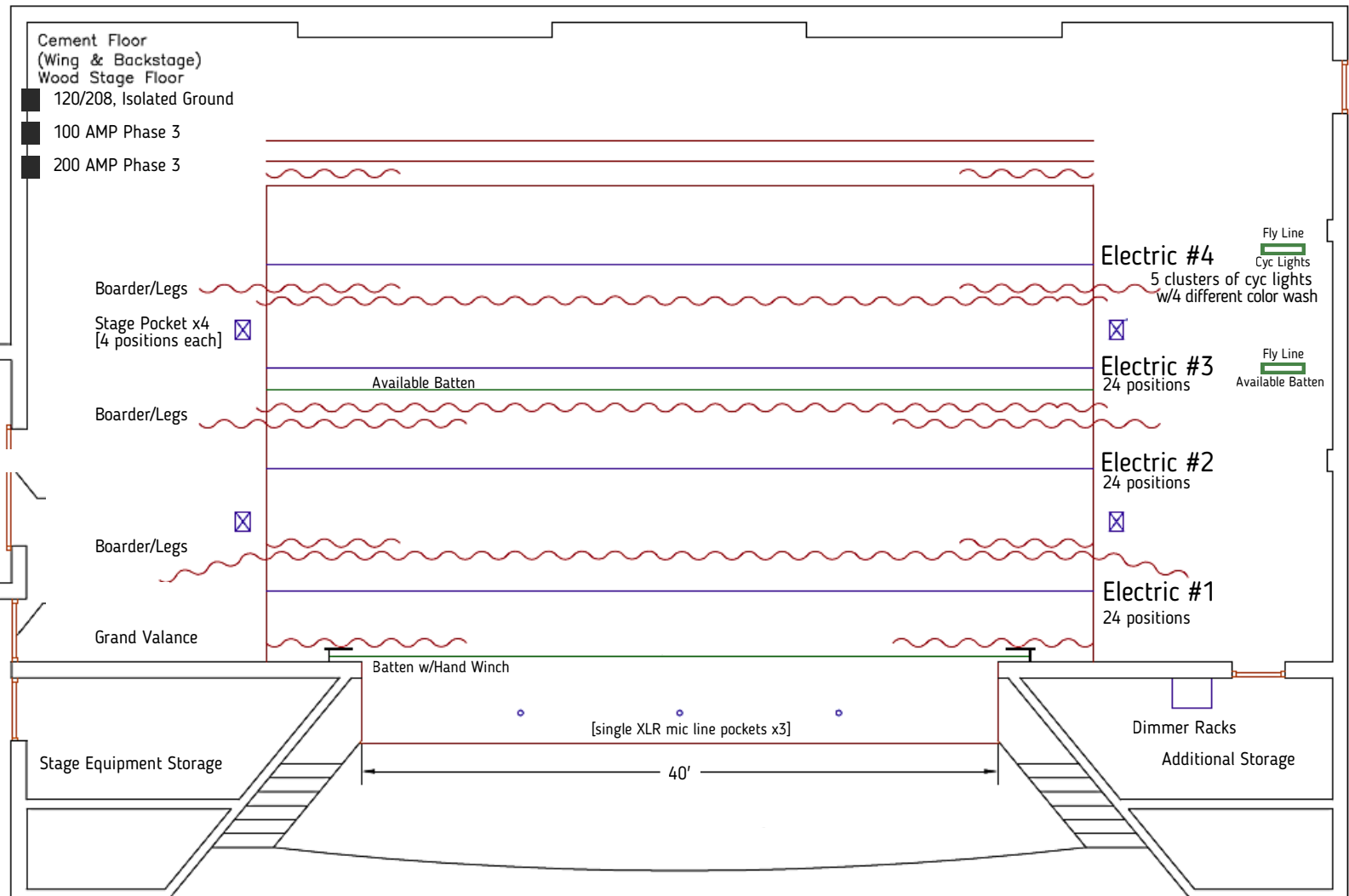
Cyc: 20'



## Jasper Arts Tech Information for Jasper Arts Center

951 College Avenue, Jasper, IN 47546

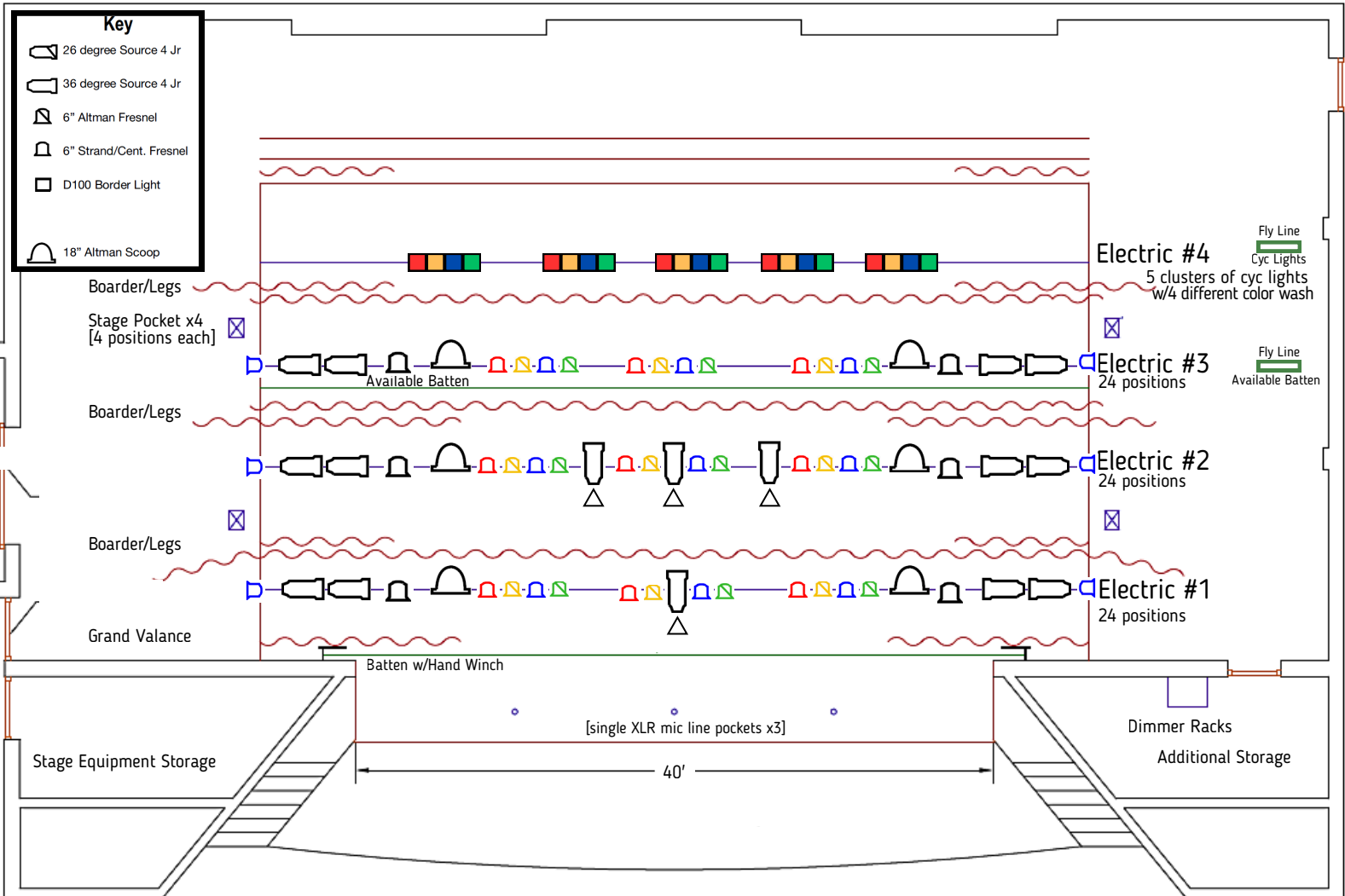
:DANNY KOPP (FACILITY MANAGER & TECHNICAL DIRECTOR):  
:DKOPP@JASPERINDIANA.GOV :812-482-3070 :812-634-6197:





951 College Avenue, Jasper, IN 47546

:DANNY KOPP (FACILITY MANAGER & TECHNICAL DIRECTOR):  
 :✉️DKOPP@JASPERINDIANA.GOV 📞812-482-3070 📞812-634-6197:





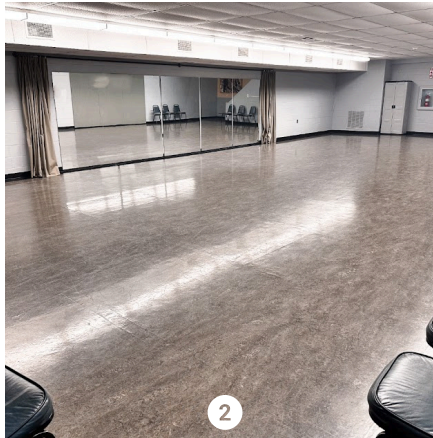
## Jasper Arts Tech Information for Jasper Arts Center

951 College Avenue, Jasper, IN 47546

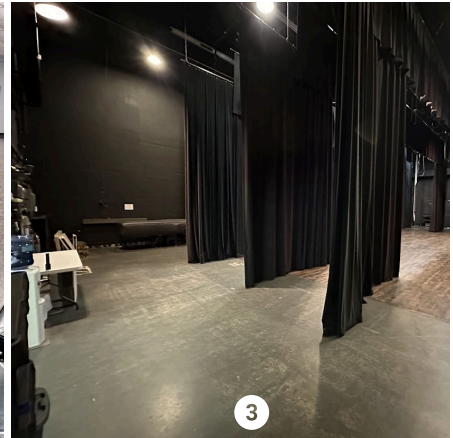
⋮ DANNY KOPP (FACILITY MANAGER & TECHNICAL DIRECTOR) ⋮  
⋮ DKOPP@JASPERINDIANA.GOV ⋮ 812-482-3070 ⋮ 812-634-6197 ⋮



1



2



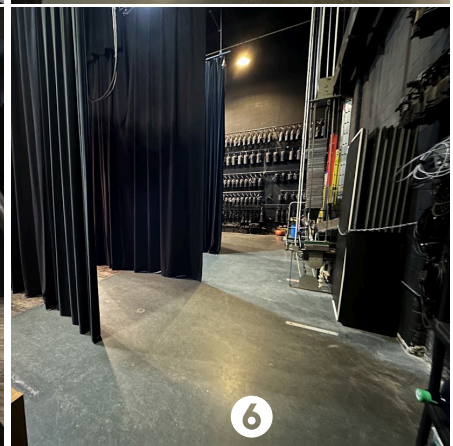
3



4



5



6



7



8

- 1. Loading Dock
- 2. Dance Studio
- 3. Stage Right
- 4. Disconnects
- 5. Loading Dock seen SR
- 6. Stage Left
- 7. Presentation w/Projections
- 8. FOH Mixing Position