



Jasper Community Arts Tech Information for Jasper Arts Center

951 College Avenue, Jasper, IN 47546

:DANNY KOPP (FACILITY MANAGER & TECHNICAL DIRECTOR):
:✉️DKOPP@JASPERINDIANA.GOV 📞812-482-3070 📞812-634-6197:

STAGE DIMENSIONS

Depth:

Plaster line to cyc: 30 feet
Plaster line to back of house: 39 feet
Apron to Grand Traveler: 5½ feet

Wing Space:

Stage Left: 15 feet (obstructed)
Stage Right: 15 feet
curtains extend into wings

Width:

Proscenium width: 40 feet
Wall to wall: 82 feet

Height

NON FLY-HOUSE featuring 16 feet average trim heights
Stage floor to I-Beam: 25 feet
Proscenium height: 18 feet

STAGE ACCESS

Loading Dock: Truck height with dock plate at stage level 8' x 12'
Internal loading door 7'6" x 11'6"

External Sidewalk: Exit door USL wraps around front of building as well as down and around to side entry found on dance studio level

POWER/DISCONNECTS

400 AMP/3-Phase Stage Power (USR) venue's house lighting system also connected to this power source
200 AMP/3-Phase Stage Power (USR)
100 AMP/3-Phase Stage Power
Camlock connectors 100 & 200

DRESSING ROOMS & SUPPORTED SPACES

Small Chorus Dressing Room: 5-Person, lighted mirrors, restroom and shower, includes in-room sinks
Large Chorus Dressing Room: 6-Person, lighted mirrors, restroom and shower, includes in-room sinks.
Availability for additional six members, total maximum for room is 12 total.
Green Room: Lounge area, refrigerator/freezer, eat-in seating availability
Dance Studio: Located at ½ level from the stage at lower level door entry. 54'x27' space includes full length mirrors
Laundry: Washer and dryer are stacked and located in the loading dock. Steamers and irons are in dressing rooms.
FOH/Tech Booth: Light and Audio Console located in the balcony above the back of house auditorium

HEADSET SYSTEM

Clear Com, 7 stations--SL, SR, Technical Balcony/FOH, House Center



Jasper Community Arts Tech Information for Jasper Arts Center

951 College Avenue, Jasper, IN 47546

:DANNY KOPP (FACILITY MANAGER & TECHNICAL DIRECTOR):
:✉DKOPP@JASPERINDIANA.GOV :📞812-482-3070 :📞812-634-6197:

ELECTRICS: Maximum trim height 20'

- House Beam: 32 circuits (usually use 26° instrumentation)
- Electric #1: 24 circuits (flyable to hang); 5' from plaster line
- Electric #2: 24 circuits (flyable to hang); 13' from plaster line
- Electric #3: 24 circuits (flyable to hang); 20' from plaster line
- Electric #4: 4 available color border lights/cyc lighting; 25' from plaster line
- Stage Pockets - located in 2nd and 3rd wings, 4 circuits per pocket w/total of 16 circuits; usually need to 2-fer

DIMMING SYSTEM:

- ETC Element or ETC Express 48/96
- ETC Sensor dimmer rack, 132 stage dimmers (dimmer per circuit)
- 5 house dimmers (controlled w/ stage lighting)

INSTRUMENT INVENTORY:

ETC

- (24) 26° ETC Source 4 Juniors (use "m" templates)
- (16) 36° ETC Source 4 Juniors (use "m" templates)
- (5) 25°- 50° ETC Source 4 Junior Zooms (use "m" templates)
- (10) Source 4s - 19°, 26°, 36° lenses
- (24) Source 4 PARs

Century

- (8) 6x16 - 750 watt ellipses w/ gobo slot
- (21) 6x12 - 750 watt ellipses w/ gobo slot
- (12) 6x9 - 750 watt ellipses w/ gobo slot
- (40) 6" - 500 watt Fresnel (9 Strand-Century)

Altman

- (12) 6x12 - 1000 watt Altman axial ellipses w/ gobo slot
- (4) 6x12 - 750 watt Altman ellipses w/ adjustable iris
- (10) 6" - 1000 watt Fresnel
- (6) PAR 64s, narrow, medium, & wide focus

Spotlights & Misc.

- (6) 40° Colortran 575 watt ellipses w/ gobo slot
- (6) 30° Colortran 575 watt ellipses w/ gobo slot
- (2) Lycian SuperArc 400 followspots (400W HTI lamp)
- (2) Lycian Midget 2K followspots (2000W BWA lamp)



Jasper Community Arts Tech Information for Jasper Arts Center

951 College Avenue, Jasper, IN 47546

:DANNY KOPP (FACILITY MANAGER & TECHNICAL DIRECTOR):
:✉DKOPP@JASPERINDIANA.GOV :📞812-482-3070 :📞812-634-6197:

MIXER

Digital Board: Midas M32 [FOH position in tech balcony]
Analog Board: Soundcraft GB8 [DSL storage for band mixes]
32 input snake from stage to FOH position in tech balcony

SPEAKERS

- (3) *EAW MK-5366 15" Speakers (left/center/right) - in air above orchestra
 - (3) *EAW MK-2366 12" Speakers (left/center/right) - in air mid auditorium on delay
 - (4) *Celestion SR 2 1000's subwoofers - in the orchestra pit
 - (4) Carvin 752 wedge monitors
 - (2) Yamaha A15 speakers
 - (2) Grund Audio Design monitors (ST-122M)
 - (2) Electro Voice ZLX-12P powered speakers
- *DENOTES MAIN SOUND SYSTEM*

MICROPHONES

- (7) Shure SM-58s
- (5) Shure SM-57s
- (4) Shure SM-81s
- (8) Audix F15s
- (3) Samson S11s
- (1) Audio Technica ATW-R10 Wireless Lavalier
- (1) Shure AXS58D-V Handheld Wireless, Freq. 169.445
- (1) Shure AXS58D-CA Handheld Wireless, Freq. 176.200
- (4) Shure Presenter Series Wireless Lavalieres, Freq. 598.625, 603.900, 615.900, 623.350
- (1) JTS NX2 drum mic
- (1) JTS NX7 drum mic
- (3) JTS NX6 drum mics
- (1) Samson IR-3/SM58 Handheld Wireless
- (3) Audio Technica AT871 Boundary (170° & 100° elements)

PROJECTORS & SCREENS

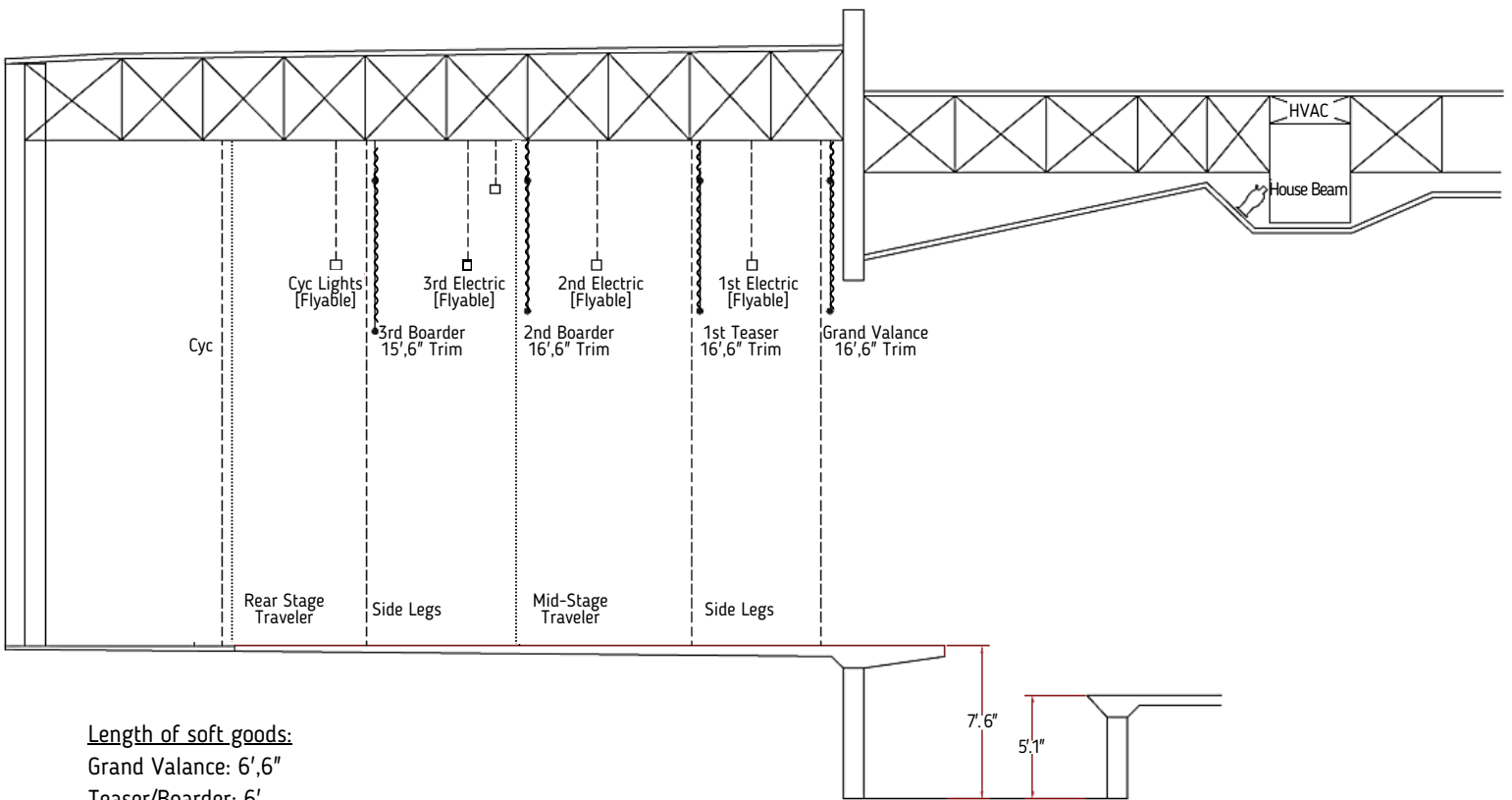
- (2) EPSON EX3220 1080P Digital Projector
- (2) BENQ MH733 1080P Digital Projector

Projector location setup in front of orchestra for mirrored displays on left and ride of the proscenium
screen dimensions: 7.5' x 10'



Jasper Community Arts
Jasper Community Arts Tech Information for Jasper Arts Center
 951 College Avenue, Jasper, IN 47546

:DANNY KOPP (FACILITY MANAGER & TECHNICAL DIRECTOR):
 :DKOPP@JASPERINDIANA.GOV :812-482-3070 :812-634-6197:



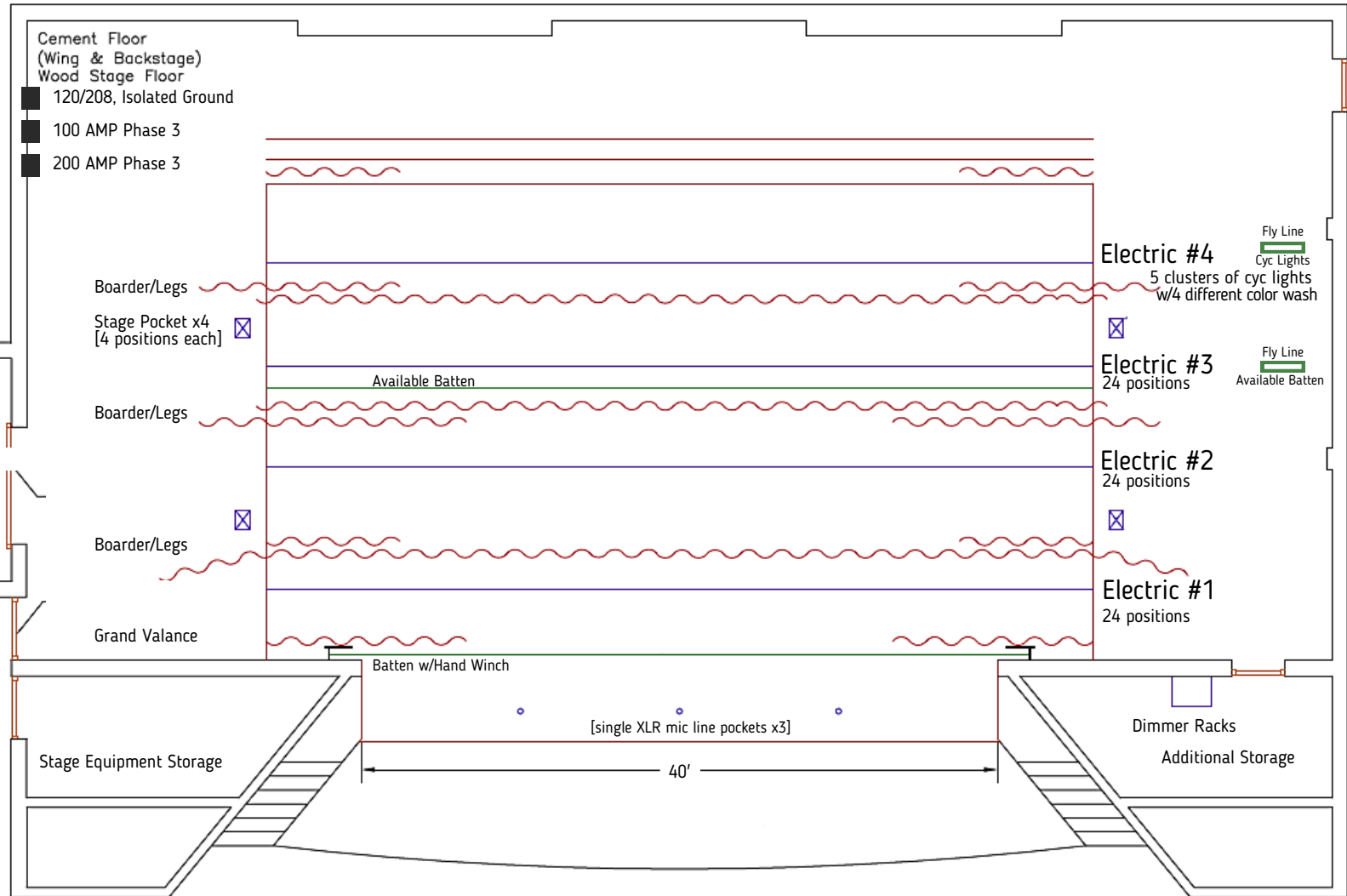
Length of soft goods:
 Grand Valance: 6',6"
 Teaser/Boarder: 6'
 Travelers/Legs: 18'
 Cyc: 20'



Jasper Community Arts Tech Information for Jasper Arts Center

951 College Avenue, Jasper, IN 47546

:DANNY KOPP (FACILITY MANAGER & TECHNICAL DIRECTOR):
:DKOPP@JASPERINDIANA.GOV :812-482-3070 :812-634-6197:





Jasper Community Arts Tech Information for Jasper Arts Center

951 College Avenue, Jasper, IN 47546

:DANNY KOPP (FACILITY MANAGER & TECHNICAL DIRECTOR):
 :DKOPP@JASPERINDIANA.GOV : 812-482-3070 : 812-634-6197 :

